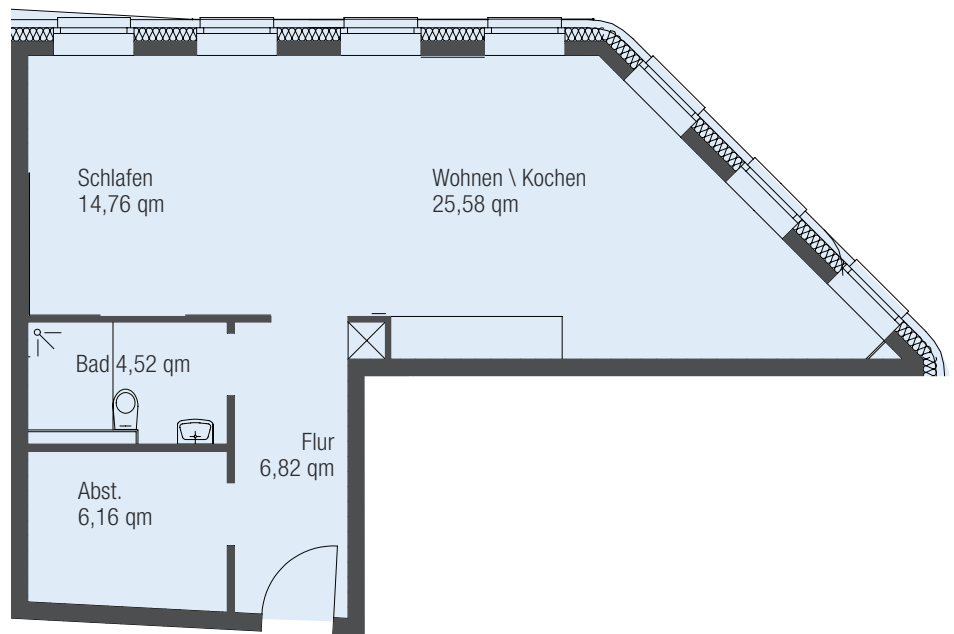
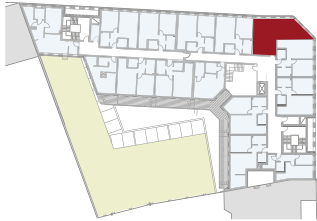
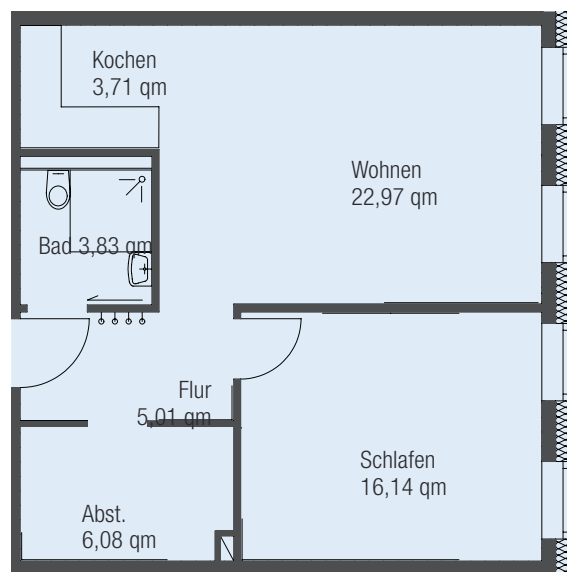


- Wohnung 5 (1. OG)
- 20 (2. OG)
- 34 (3. OG)



- Wohnung 6 (1. OG)
- 21 (2. OG)
- 35 (3. OG)
- 49 (4. OG)



Wohnung 5 · 20 · 34

57,33 qm

Wohnung 6 · 21 · 35 · 49

57,16 qm